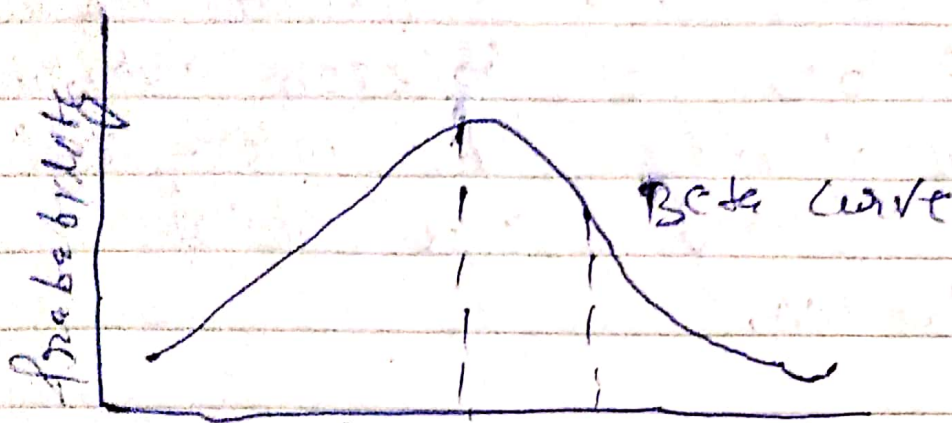


### Section - 3

Q. E- $\rightarrow$  Explain time estimator in PERT.  
Discuss briefly the limitation of operation research.

Ans-PERT: - Program Evaluation and Review Technique (PERT) a probabilistic model which is based in the Beta distribution is called PERT.



There are the following operation research

- ① Dependence on on electronic computers
- ② Non-quantifiable factors
- ③ Wrong estimation
- ④ Involves time and cost
- ⑤ Simplification