

## Section-3

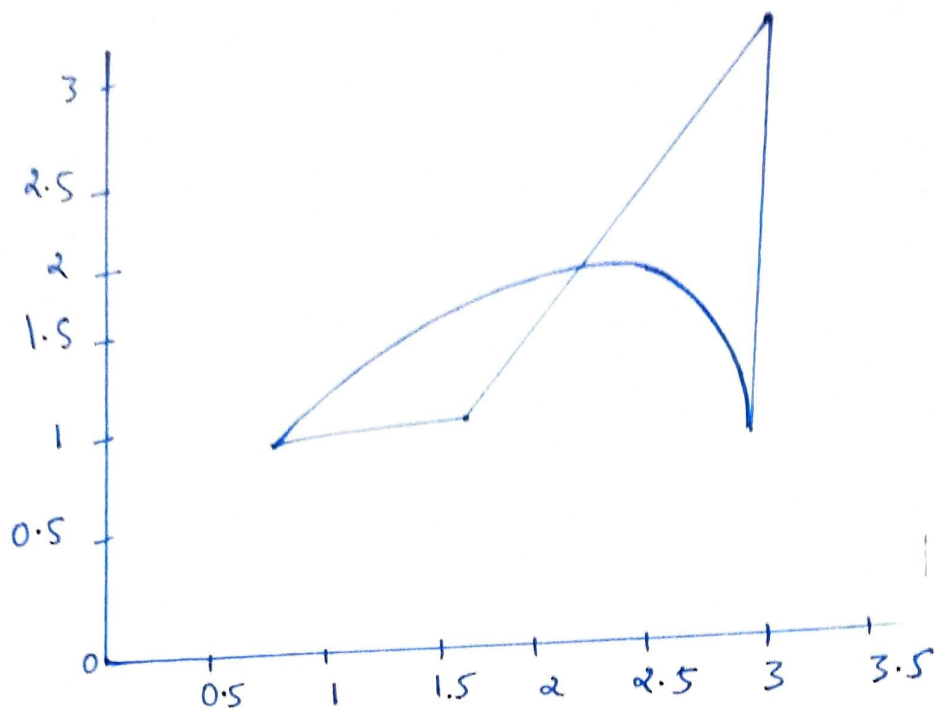
Ans-2 Properties of Bezier curve:-

- They are less flexible
- They are not designed with sharp, bend and cornered curves
- They are special cases of B-spline curves
- A change in position of curve causes the whole curve to change.

for  $n=3$

$$x = [12 \ 4 \ 3]$$

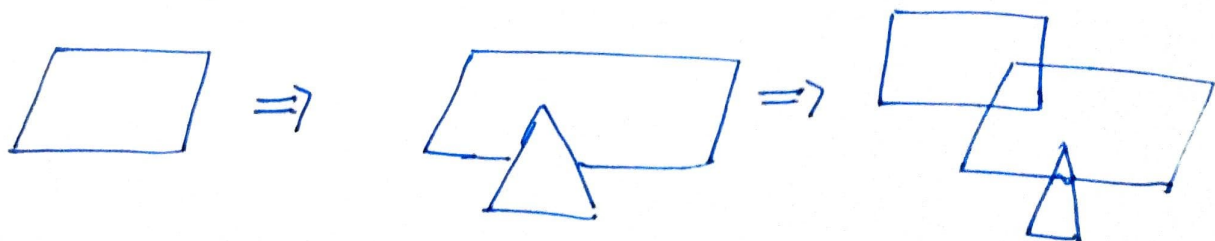
$$y = [1 \ 1 \ 3 \ 1]$$



Hidden surface removal means to draw surface we can see surfaces, we can't see and their elimination methods are:-

- 1) Occluded surface
- 2) Back Face
- 3) Faces outside view volume.

Painter's algorithm :-



Only if graphics primitives can be separated by planes :-  
all the primitives being on same side of viewpoint will be intersected first, so part to back analysis becomes more efficient.