

Q.1 Ans Stability Requirements:-

The forces act on a retaining wall. The following requirements should be completely for the stability of retaining wall.

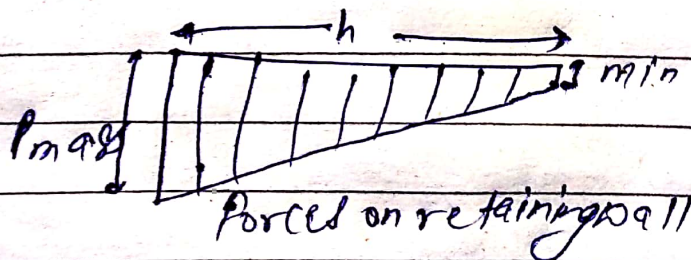
1) Stabilizing moment:-

The sum of vertical loads is composed of weight of backfill on the heel.

2) Overturning moment

It is equal to P_{an} the horizontal component of earth pressure.

$$P_{an} = \frac{H}{3}$$



3. Factor of Safety:- According to collapse code of IS 456-2000 the stability of a structure as a whole against overturning shall be ensured so that the restoring moment - the

vertical pressure on the soil under the base should not exceed the permissible bearing on soil.

