

Ans. Data Modeling (Data modelling) is the process of creating a data model for the data to be stored in a database. This data model is a conceptual representation of data objects, the associations between different data objects and the rules.

Entity Relationship Diagram (ERD) :-

An ERD is a more detailed picture of data stores, independent of the process performed with these data stores. ERD is a data-oriented model while DFD is a process-oriented model.

Components of ER-Diagram :-

1) Entity :- An entity is a fundamental thing like an organization about which data may be maintained. An entity is represented by a rectangular box. Example

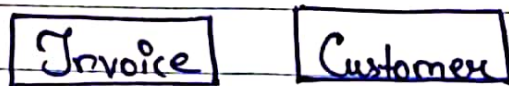


fig :- Entity

2) Relationships :- Relationship is a reason to associate two entity or more entity types. It is represented by a diamond-shape box. Example

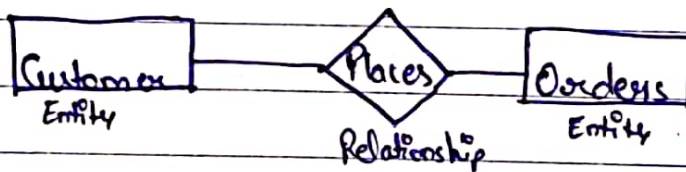


fig :- Relationships

3) Attributes :- It is a property or characteristics of an entity, that is of interest to organization. It is represented by an ellipse shape.

Example :- Customer is an entity that has attribute cust-id, cust-name etc.

Cust_name

fig :- Attributes