

Ques 2 :->

Data Modelling :->

-> A data modelling is a description of how data should be used to meet the requirement given by the end user.

-> It helps to understand the information requirement

-> It differs according to the type of the business, because the business process in each sector is different and it needs to be identified in the modelling stage

-> Initial stage in the analyzing the situation, gather data, data modelling starts with data gathering.

-> When developing a proper data modelling, it is important to communicate the stakeholders about the requirement.

Date: / /

Levels of Data Modelling

→ There are four levels of data modelling.

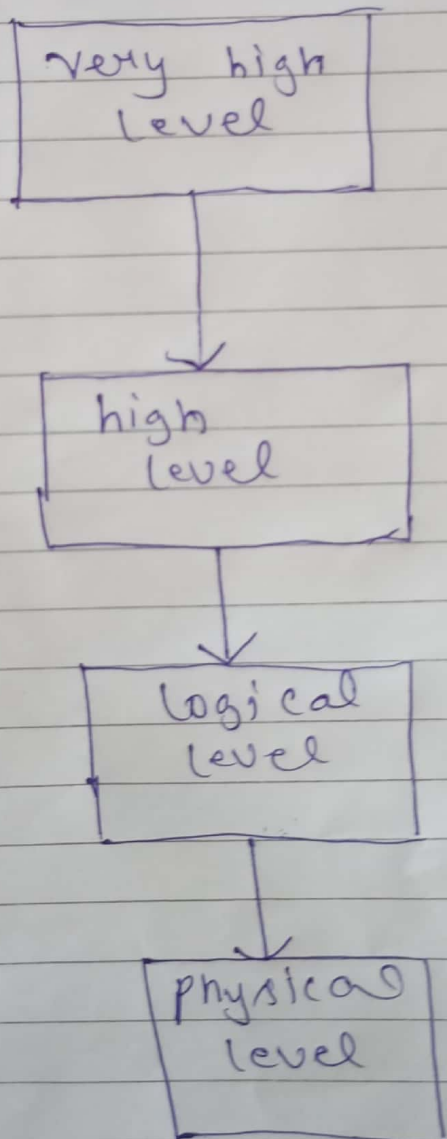


Fig:-

Entity Relationship Diagram \rightarrow

\rightarrow It also known as ERD.

\rightarrow ERD is a type of structural diagram for use in database.

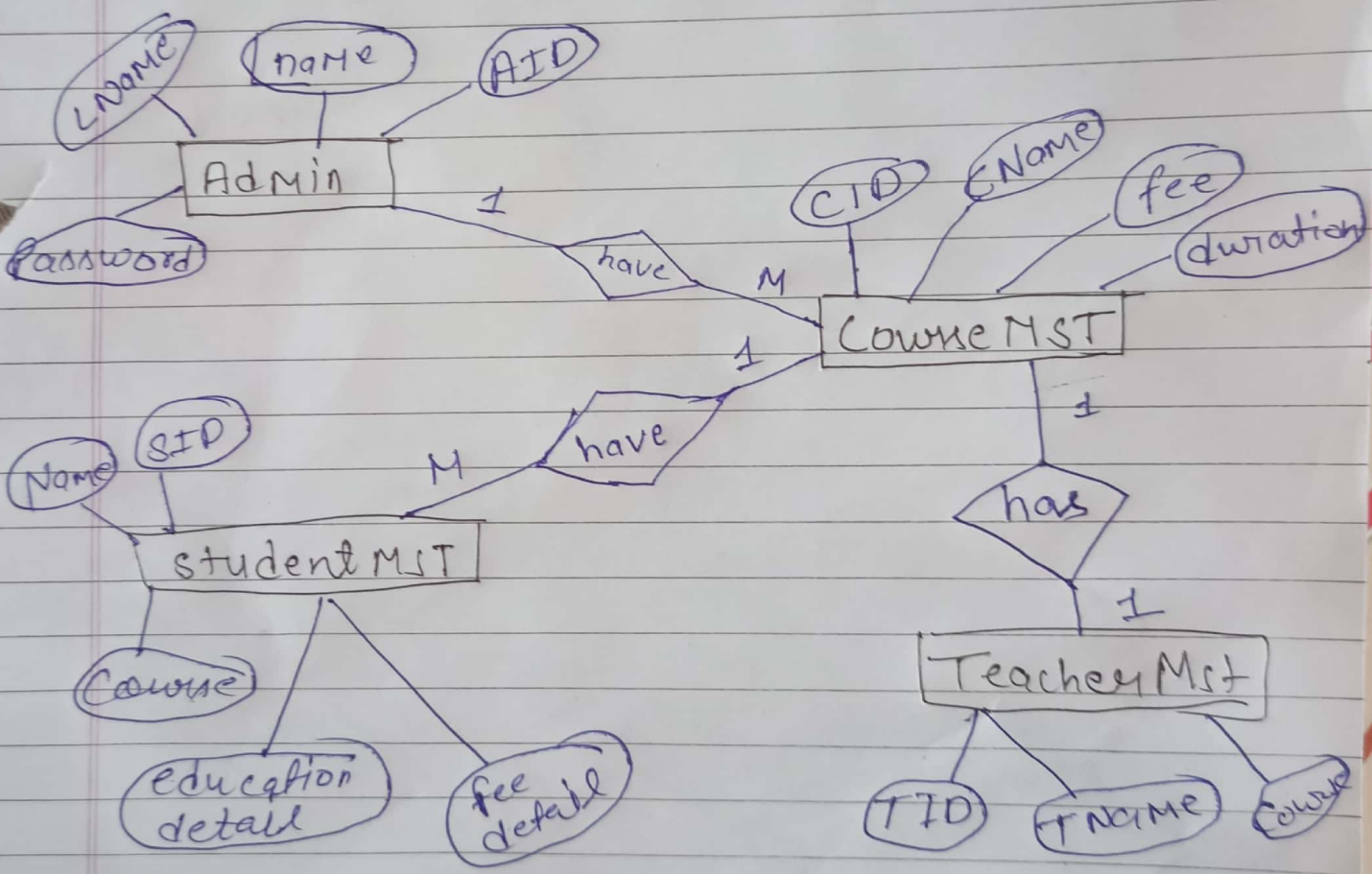


Fig: \rightarrow ER diagram of student management system.