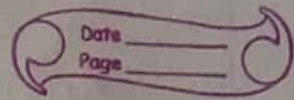


(6)

Ans 1 Section 3



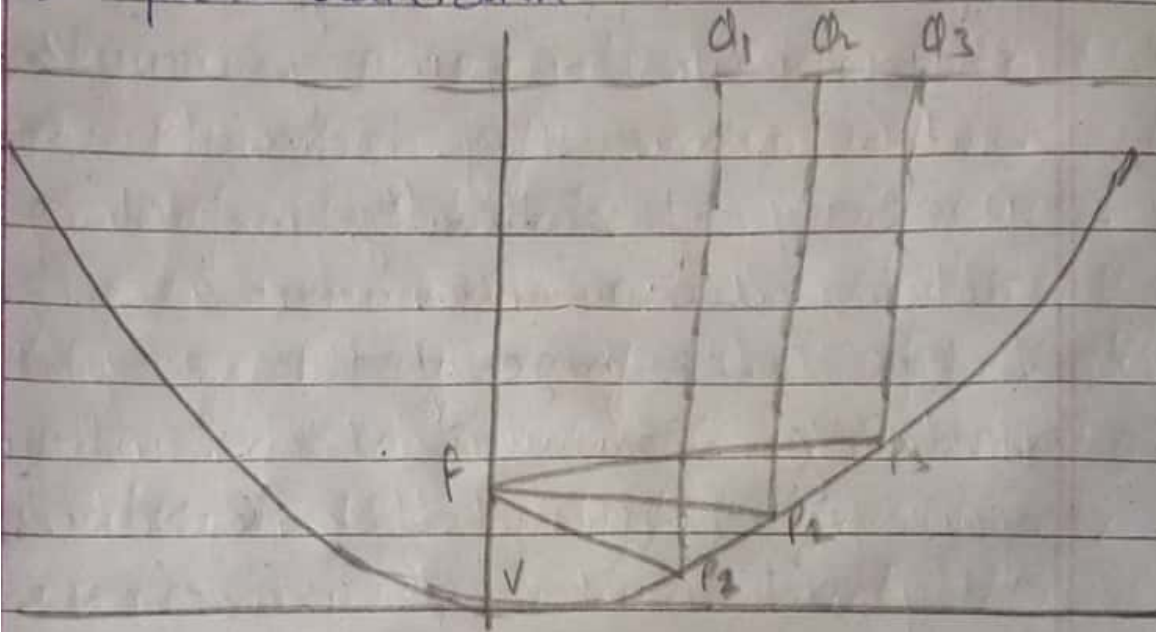
Helical antenna: →

Helical antenna have long been popular in application from VHF to micro waves requiring circular polarization, since they have the unique property of naturally providing circularly polarized radiation. One area that takes advantage of this property is satellite communications where more gain is required than can be provided by a helical antenna alone, a helical antenna can also be used as a feed for a parabolic dish for higher gain. As we shall see, the helical antenna can be an excellent feed for a dish, with the advantage of circular polarization. One limitation is that the usefulness of the circular polarization is limited since it cannot be easily reversed to the other sense - left handed to right-handed or vice-versa.

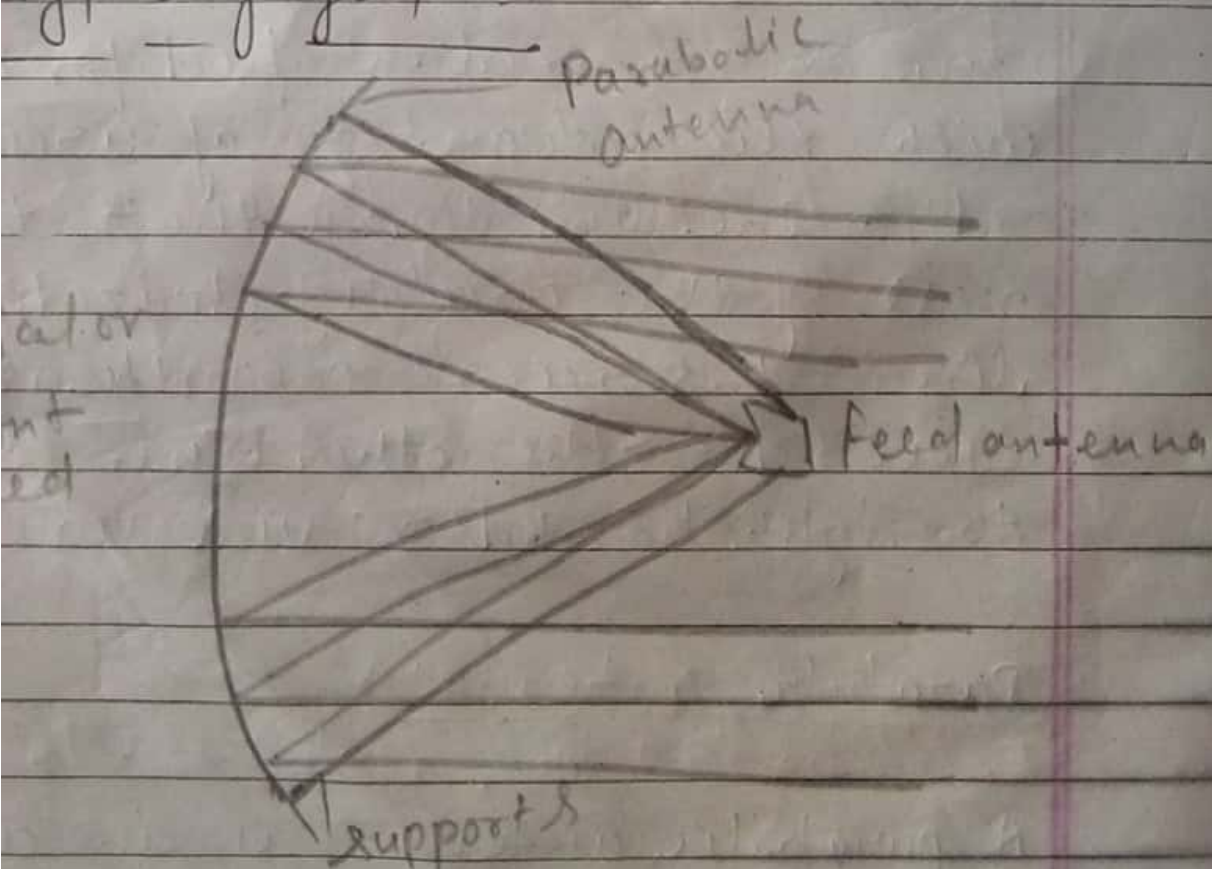
Parabolic antenna: →

A parabolic antenna is an antenna that used a parabolic reflector or a curved surface with the cross sectional shape of a parabola

To direct the radio wave the most common form is shaped like a dish and is popularly called a dish antenna or parabolic dish.

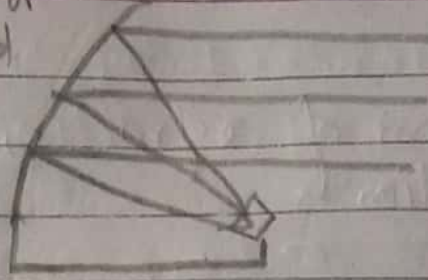


Types of feed →

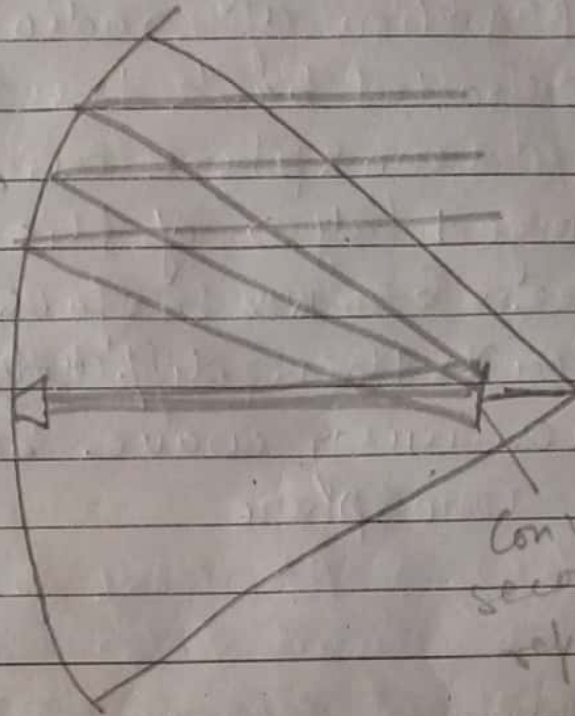


8

off-axis or
offset feed

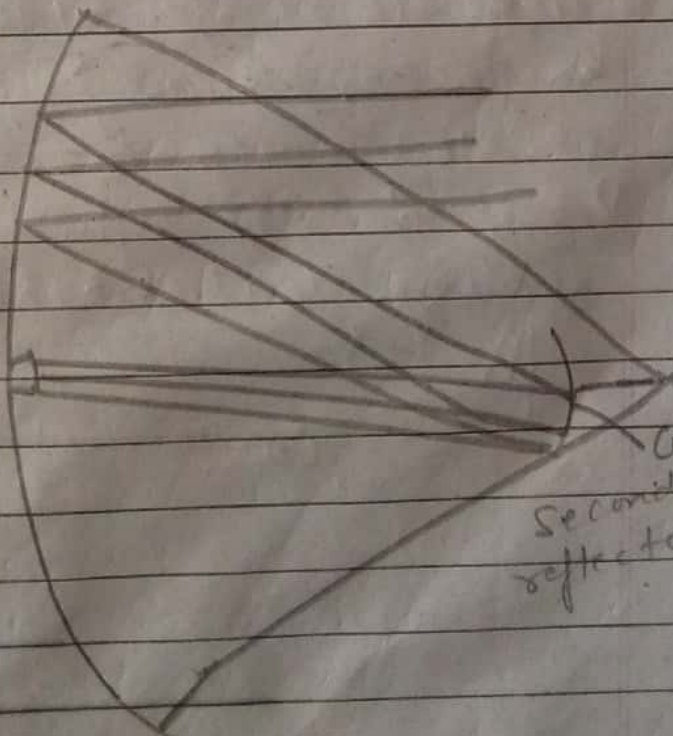


Cassegrain



Convex
secondary
reflector

Gregorian



Concave
secondary
reflector