

# ① Rain water Harvesting :-

→ The Harvesting of Rain water simply involves the collection of water from the surface on which Rain falls, and subsequently storing this water for later use — water can also be collected in Dams from Rain falling on to ground

and producing Run off.

→ Either way, the water collected can be considered to be precious.

→ Irrigation of annual Crops plus trees and trees

→ Domestic and Livestock consumption.



→ Groundwater recharge.

→ Hence, it is catching of rain water when it falls and storing to use during the ~~the~~ non rainy season.

→ RWH - yield copious amount of water. For an average rainfall of 1,000 mm.

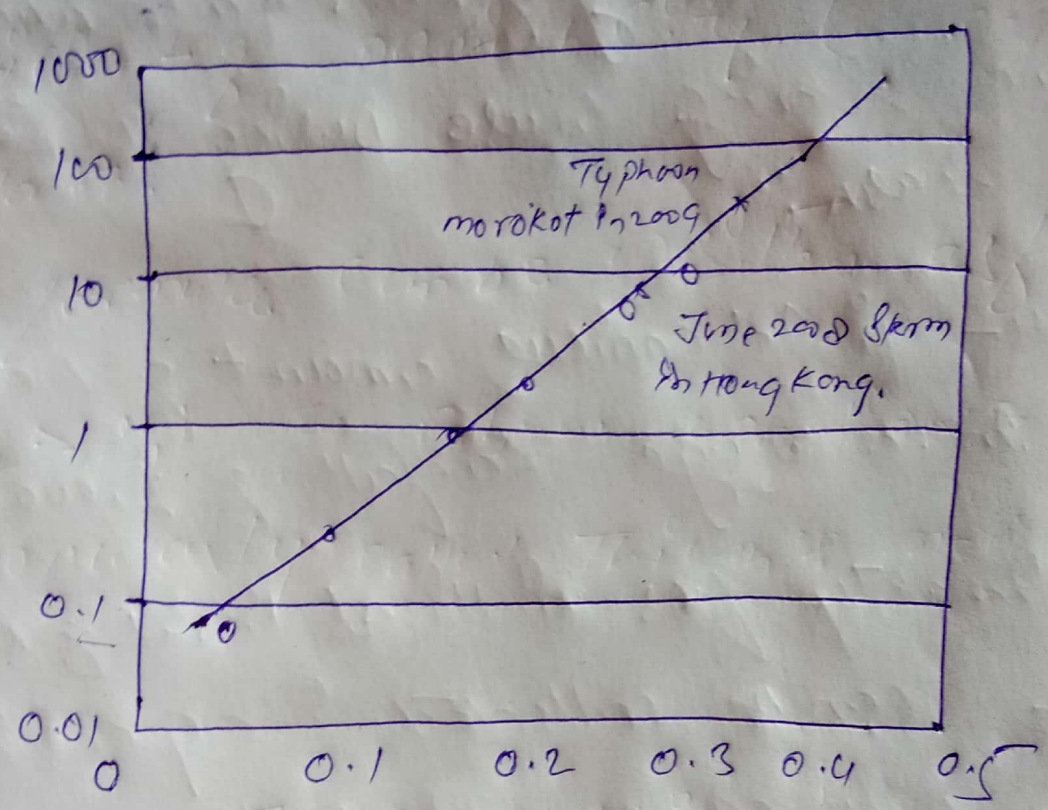
Approximately four million litres of rain water can be collected in a year in an acre of land (4047 m<sup>2</sup>) pasteurisation.

\* probable max<sup>m</sup> precipitation :-

→ The WMO defines probable max<sup>m</sup> precipitation (PMP) as "the greatest depth of precipitation for a given duration meteorologically possible for a given size storm area at a particular location at a particular time of year, with no allowance made for long time."



Storm-Based (and slide density)  
 (Nos./km<sup>2</sup>)



Normalized maximum rolling  
 24-h rainfall.