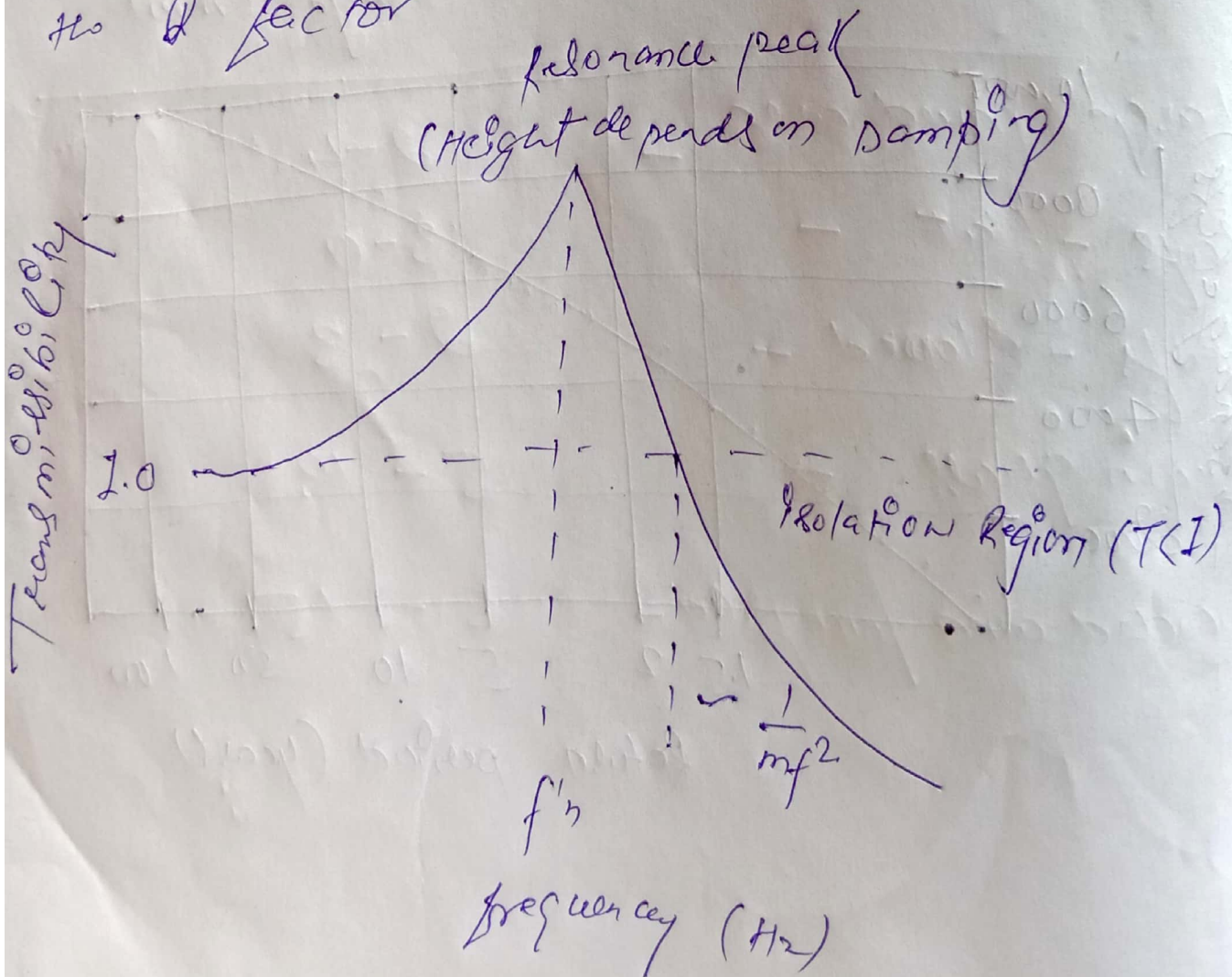


46

Transmissibility

→ Transmissibility is the ratio of output to input
Transmissibility: means Amplification and
max^m amplification occurs when forcing
frequency and natural frequency of the system
coincide.

→ There is no unit designation for Transmissibility
although it may sometimes be referred to as
the Q factor



* Depression Storage -

→ Depression storage refers to small low points in undulating terrain that can store precipitation that otherwise would become runoff.

→ The precipitation stored in these depression is then either removed through infiltration into the ground or by evaporation.

Land cover Type

Depression Storage Range (mm)

Large paved area -

2-4

Roofs - flat -

3-0

Roofs - sloped -

2-3

Lawn grass -

5-13

wooded area / open field -

5-15