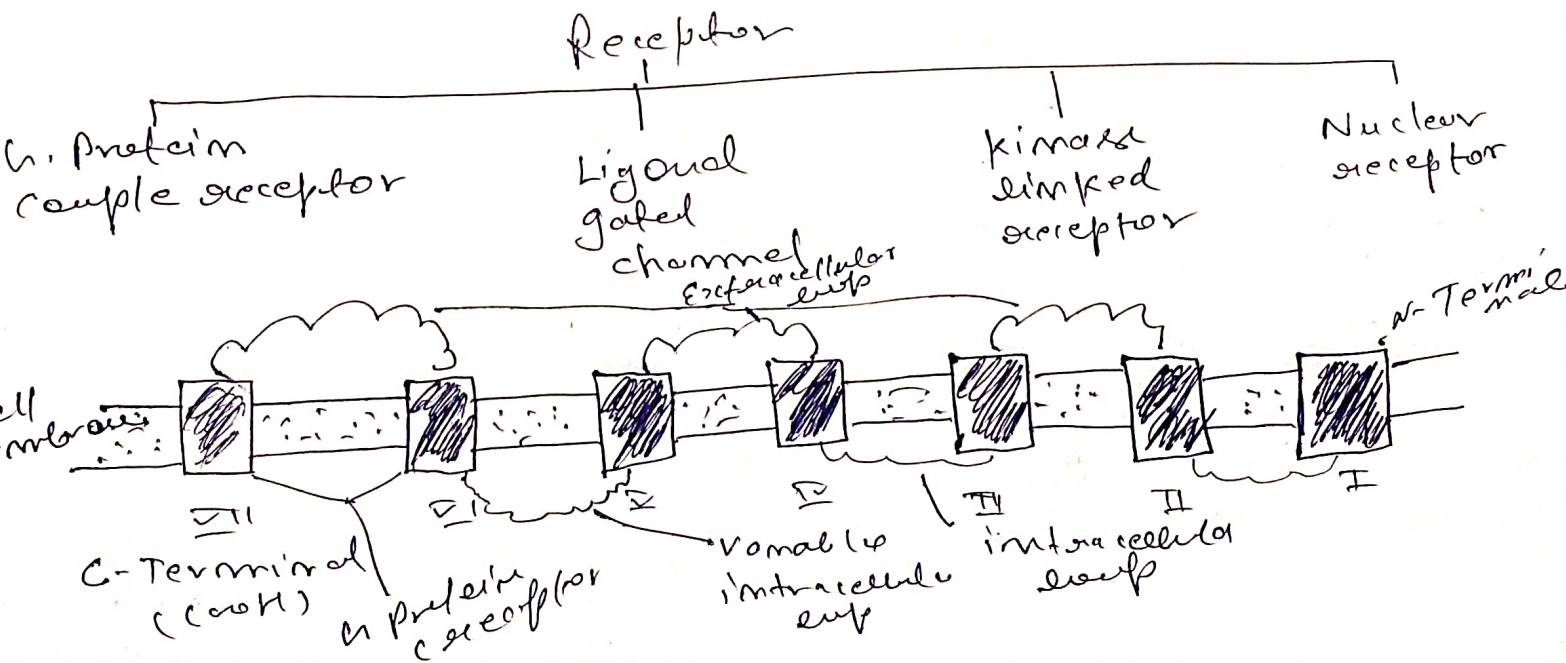


Receptor

Ans: Define receptor, write the structural features of GPCR. How does signal transmit by JAK-STAT.

Receptor are proteins. Usually cell surface receptors which bind to signals and cause responses in the immune system including cytokine receptor growth factor receptor and Fc receptor. Receptor can induce cell growth, division and death. can also membrane channels or regulate cell signaling.



JAK-STAT Pathway

In JAK-STAT system of a signal components. A receptor, which penetrates the cell membrane. Janus Kinase (JAK) which is bound to the receptor signal transduce and activator of transcription (STAT) within carrier the signal into the nucleus and DNA. or cytokine bind the receptor - JAK adds a phosphate phospholub to receptor. attract to STAT protein within also phosphorylate binds to each other forming a dimer. Dimer move to nucleus and binds to DNA and cause transcription of genes.